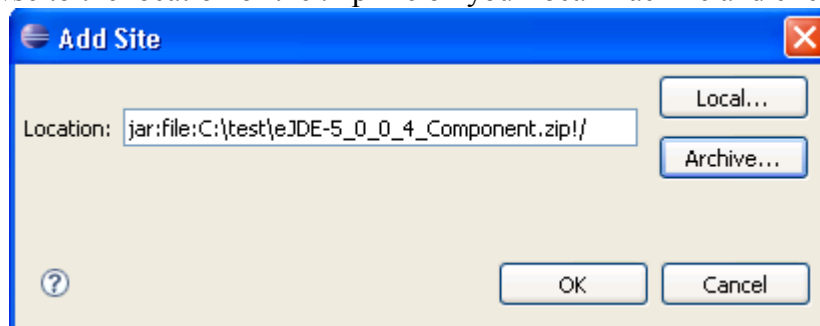


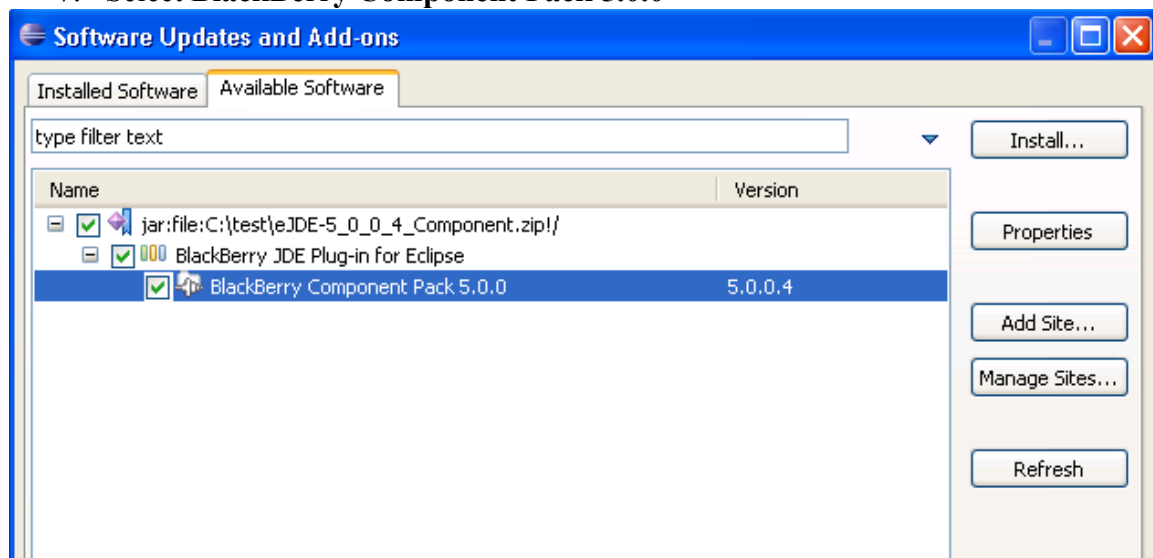
# Install the BlackBerry Component Pack 5.0 Plug-in for Eclipse from a .zip file

Before you begin, make sure BlackBerry JDE Plug-in for Eclipse already is installed and the component pack 5.0 zip package has been downloaded to the local machine successfully.

1. In Eclipse, select **Help > Software Updates**.
2. Select the **Available Software** tab.
3. Click **Add Site**.
4. In the Add Site dialog, click **Archive**.
5. Browse to the location of the .zip file on your local machine and click **OK**.



6. Click **OK**. The BlackBerry JDE Plug-in for Eclipse appears in the Available Software list
7. Select **BlackBerry Component Pack 5.0.0**



8. Click **Install**.